



GAT MONTHLY MEMBERSHIP PROGRESS REPORT

Results as of: 2/28/2023

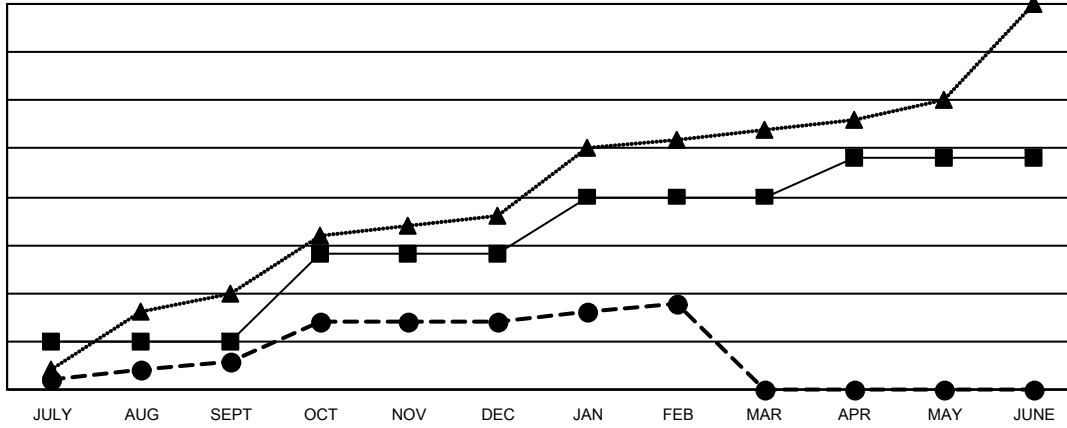
Multiple District 308

LOCATION: SINGAPORE

Clubs			
RESULTS FOR 2022-2023			
QUARTER	NEW CLUB GOAL	NEW CLUBS	DROPPED CLUBS
JULY/AUG/SEPT	5	3	4
OCT/NOV/DEC	9	4	4
JAN/FEB/MAR	6	2	5
APR/MAY/JUNE	4	0	0

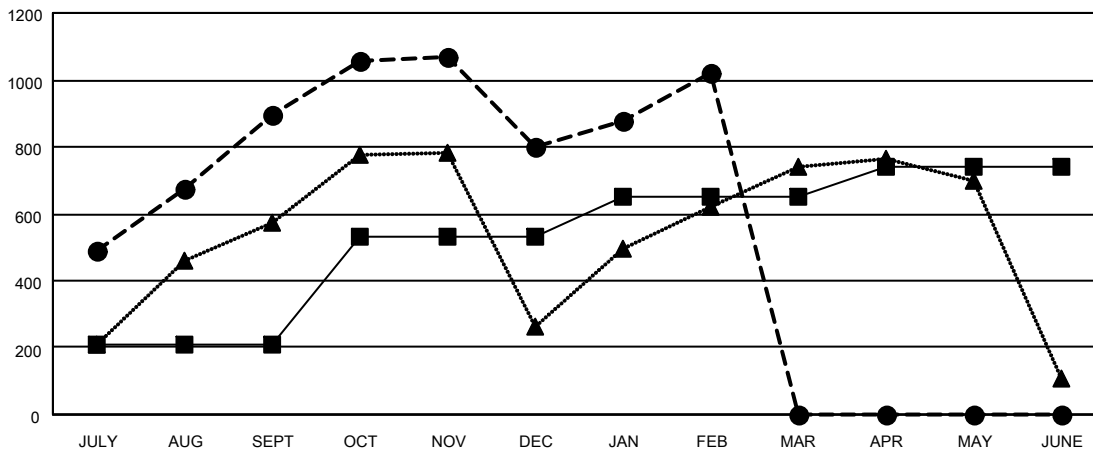
Members			
RESULTS FOR 2022-2023			
QUARTER	MEMBER GROWTH NET GOAL	MEMBER GROWTH ACTUAL	DROPPED MEMBERS ACTUAL (including transfers)
JULY/AUG/SEPT	210	1,230	271
OCT/NOV/DEC	320	396	458
JAN/FEB/MAR	120	406	174
APR/MAY/JUNE	90	0	0

GOALS AND ACTUAL NEW CLUBS CUMULATIVE



- - CURRENT YEAR GOALS FOR NEW CLUBS
- - CURRENT YEAR ACTUAL NEW CLUBS
- ▲ - LAST YEAR ACTUAL NEW CLUBS

GOALS AND ACTUAL MEMBERS CUMULATIVE



- - MEMBER GROWTH NET GOAL
- - MEMBER GROWTH ACTUAL
- ▲ - LAST YEAR MEMBERSHIP ACTUAL

DROPPED CLUBS: 13	311 CLUBS OF 484 ADDED 1 OR MORE NEW MEMBERS	GENDER DISTRIBUTION	
DROPPED MEMBERS		MALE	9,093 (64.43%)
DECEASED	26	FEMALE	4,957 (35.13%)
CLUB CANCELLED	169	NON BINARY	0 (0.00%)
OTHER	707	PREFER NOT TO ANSWER	62 (0.44%)
TOTAL	902	TOTAL FAMILY UNIT MEMBERS 1,996	
CLICK HERE FOR CUMULATIVE MEMBERSHIP DATA		FAMILY MEMBERS PAYING HALF DUES 1,144	